



Murray Bridge Vet Clinic

140 Swanport Road
Po Box 5181
Murray Bridge SA 5253
Ph 08 8531 4000
Fax 08 8531 4099
Email: reception
@murraybridgevet.com.au
www.murraybridgevet.com.au
ABN 44 114 962 453

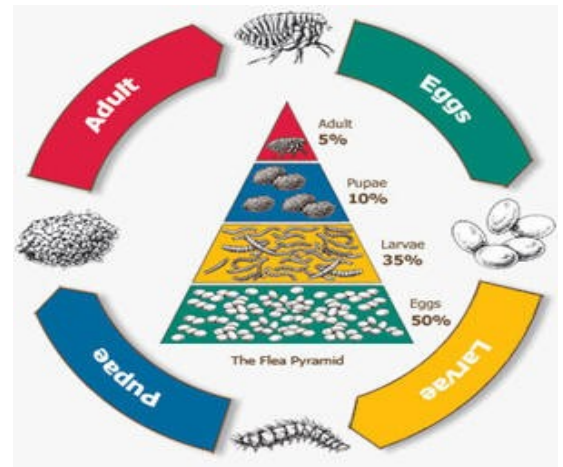


Fleas & Ticks

Protecting your pets from Fleas

Fleas can make life miserable for pets and their owners. They cause a vicious cycle of itching and scratching that may result in hair loss, irritation and flea allergy dermatitis in some pets.

Pets can pick up fleas from where other flea-infested animals have been. This could be the backyard, your home or the park. One female flea can lay up to 50 eggs per day that fall off into the environment to develop into adult fleas 14 days to 6 months later, depending upon the environmental temperature. After developing, adult fleas can emerge to re-infest your pet. In flea-infested environments young adult fleas jumping onto your pets are unavoidable.



Treating the environment



Vacuum your entire house paying particular attention to dark corners, dark crevices, under furniture, under beds, rugs and especially around skirting boards. Vacuuming gets rid of eggs, larvae and pupae in the carpet and furniture. The vibrations from vacuuming also stimulates the fleas to emerge from their cocoons and thus they will be exposed to the insecticides that will be used. The cocoon surrounding the pupae is water tight and impervious to insecticides so the more you vacuum the better the result. When you have finished vacuuming dispose the contents of your vacuum cleaner completely.



Spray all carpets, rugs, floors, soft furnishings and places your pet sleeps with an aerosol or flea bomb that kills flea eggs, larvae and emerging adult fleas. Check the label of the sprays for active ingredients. Use one that contains IGR (Insect Growth Regulator). Make sure you spray in every nook and cranny and pay special attention around skirting boards and under rugs and furniture. Spray under beds and under couches etc. Developing fleas avoid the light and make their way to dark areas.

Don't vacuum for 2 weeks following spraying with an IGR.



Don't forget your yard and garden. Use the same spray as you used in the house. Spray around where the pet sleeps, in crevices, gravel and sandy areas. If your house is raised from the ground then you will need to spray under the house. Spray patios, verandahs and kennels.

Treatment Plan : to create a flea-free home

To eradicate any fleas that have followed your dog or cat back to your place and made a home for themselves there, do all of the following as thoroughly as possible:

- Treat all your dogs and cats with a flea control
- Clean out your pets bed
- Clean out the kennel or basket
- Throw out any cushions, bedding or soft toys you think could have infestations
- Wash pet bedding in hot water over 60°C for at least 10 minutes
- Wash household bedding in hot water over 60°C for at least 10 minutes
- Vacuum lounge chairs and cushions (and bin the vacuum bag immediately afterwards)
- Vacuum the car
- Vacuum or wash rugs
- Spray household soft furnishings with an IGR
- Spray your exterior yard

Options for dogs (either monthly, 3-monthly or yearly)

- Flavoured chewable tablets which are easy to give to your dog some which also protects against heartworm and intestinal worms
- Spot on treatments which are easy to apply to the back of the neck, great if your dog dislikes tablets
- A yearly injection is now available

It is important to use a treatment that kills all 4 stages of the flea life cycle on the dog and in the environment.

The treatments at Murray Bridge Veterinary Clinic are all safe to use on pregnant and lactating bitches and in puppies from a young age.

Options for cats (either monthly or 3-monthly)

- Small oral tablets
- Spot on treatments which are easy to apply to the back of the neck, great if your cat dislikes tablets

Some of the spot on treatments also provide protection against intestinal worms, fleas and mites

It is important to use a treatment that kills all 4 stages of the flea life cycle on the cat and in the environment.

The treatments at Murray Bridge Veterinary Clinic are all safe to use on pregnant and lactating queens and in kittens from a young age.

Protecting your pets from Ticks

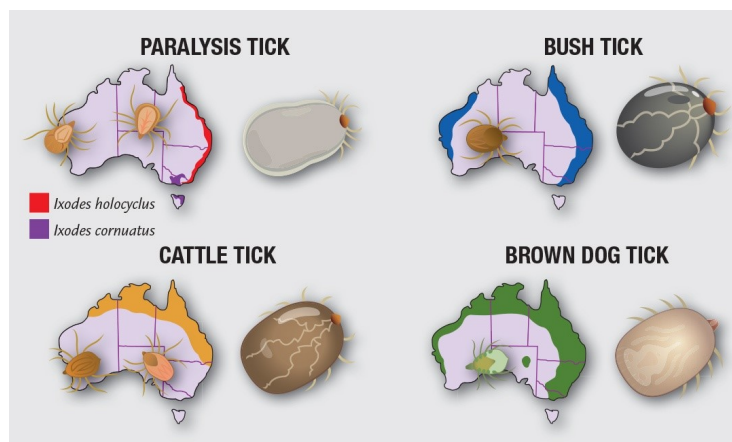
Cases of ticks in South Australia are low, however with the increase of pets travelling with their families it's important you are aware of the risks ticks pose to your pets. Murray Bridge Veterinary Clinic have products that can be used for tick prevention, but please ensure you are aware of the following information.

Ticks like bush and shrub areas : Avoid bushy areas and long grass.

Create a barrier between natural areas : If there are ticks around your home, create barriers by cutting bands of vegetation short between your lawn and surrounding natural areas, or use mulch and wood chips to create vegetation-free bands at least a few metres wide.

Remember to check your dog for ticks : Always check your dog, and yourself, for ticks when you return from areas where you may have been exposed.

Don't risk it - be proactive : Always use preventative treatment during tick season.



Brown Dog Ticks thrive in temperate regions of the country however are capable of overwintering within kennels and homes in colder climates. The Brown Dog Tick can also thrive indoors throughout its entire life cycle, unlike other tick species.

It's very important to know the correct weight of your pet when purchasing a flea & tick treatment. Please bring your pet into the clinic and use our pet scales next time their treatment is due.

Let our trained veterinary and nursing staff find the right product for your pets. You can be assured our training provides us with the knowledge needed when choosing safe parasite control.

We also have the support of the products manufactures representatives.

If you have any further questions please make an appointment with your Veterinarian or ask one of our friendly staff members.